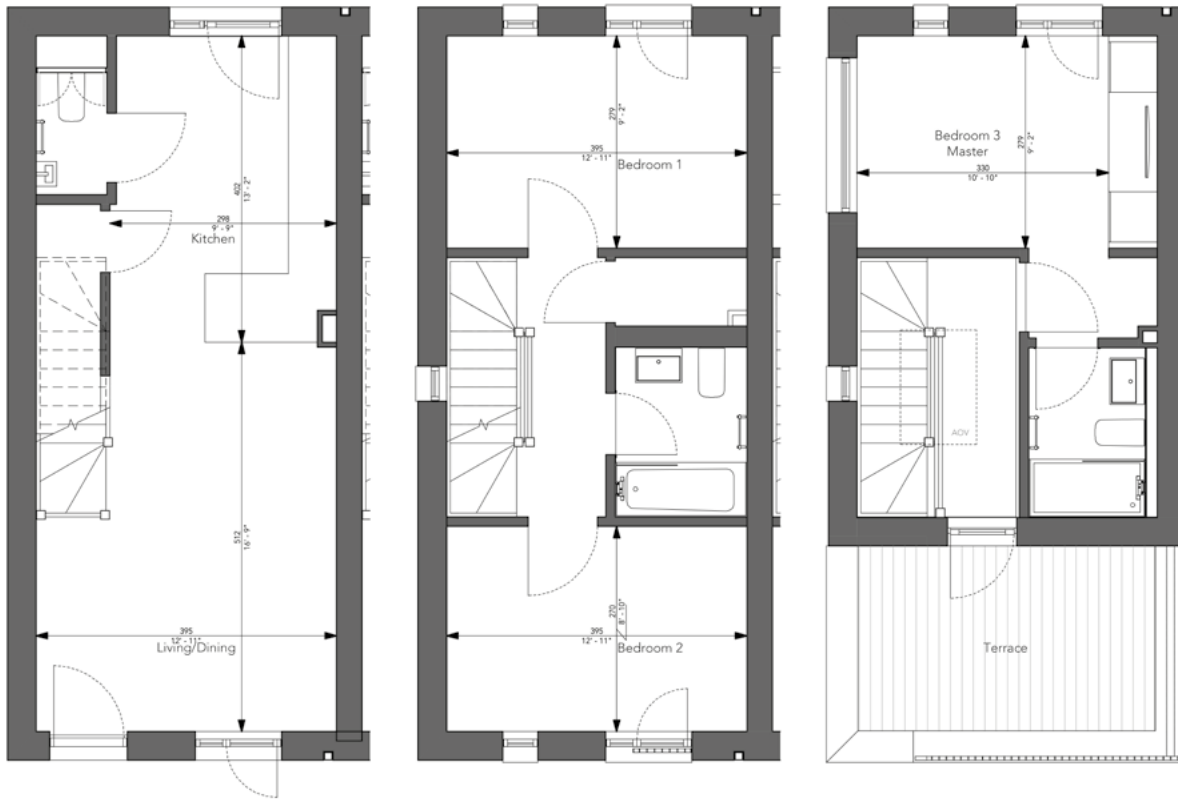


Palma

THREE BEDROOM HOME WITH REAR GARDEN AND ROOFTOP TERRACE



Sprinklers to all floors.

Automatic opening smoke vent (AOV) at head of stairs linked to fire detection in stair core.

Terrace masonry wall to plots 9 and 12 only. Gable windows to plot 13 only (refer to individual plot plans).

INTERIORS

ROOM TYPE	SIZE (CM)	SIZE (FT)
Living/Dining	395 x 512	12' 11" x 16' 9"
Kitchen	298 x 402	9' 9" x 13' 2"
Bedroom One	395 x 279	12' 11" x 9' 2"
Bedroom Two	395 x 270	12' 11" x 8' 10"
Bedroom Three (Master)	330 x 279	10' 10" x 9' 2"
Total Interior Area	97.11 SQM	1045.25 SQFT

REAR GARDENS

PLOTS	SIZE (SQM)	SIZE (SQFT)
09	24.5	263.7
10	19.9	214.2
11	19.9	214.2
12	20.2	217.4

ROOF TERRACE AREA	9.7 SQM	104.4 SQFT
--------------------------	---------	------------

*For indicative purposes only. Not to scale.